

FRAME AND ORNAMENTATION FINISH:

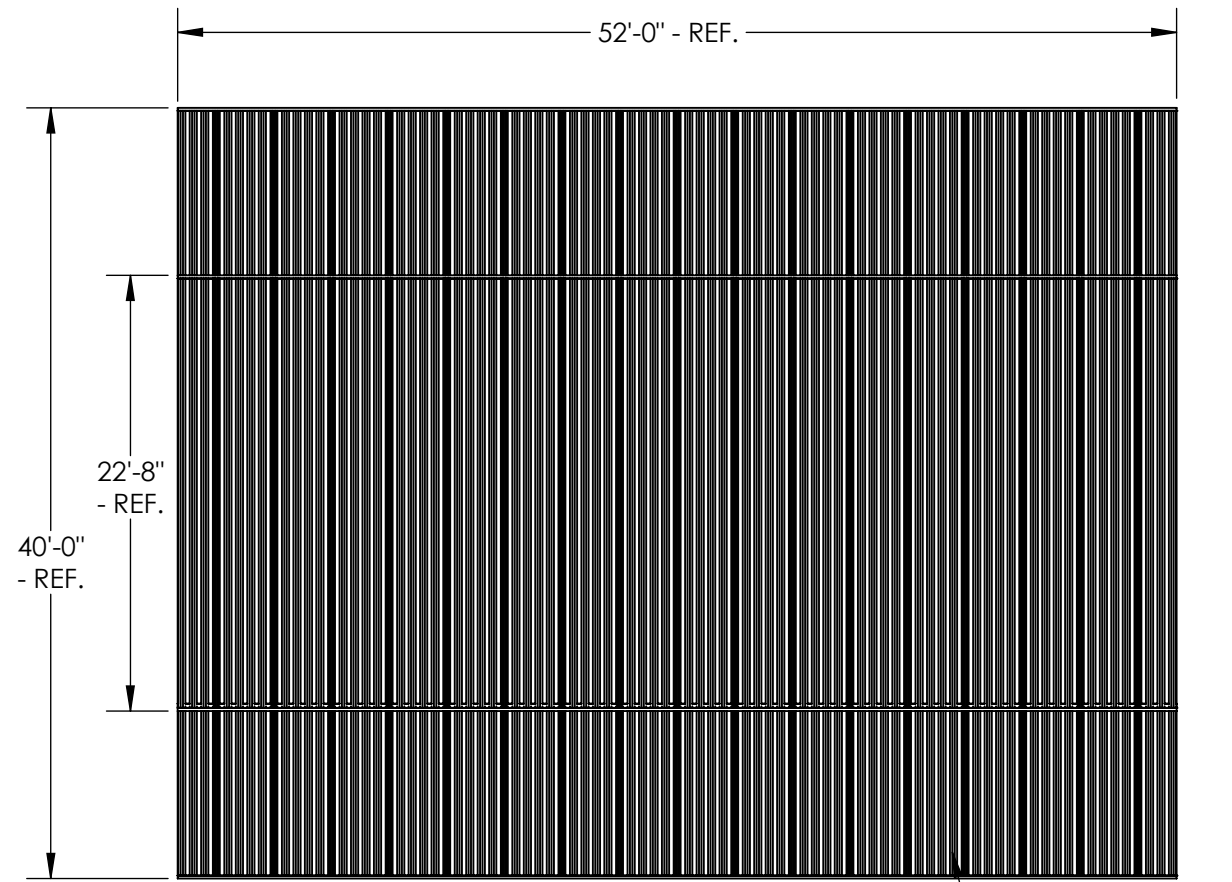
MEMBERS SHOT BLASTED TO NEAR WHITE CONDITION (SSPC SP-10), WASHED AND SEALED IN A PHOSPHATE SPRAY, COATED WITH A SPECIAL EPOXY PRIMER POWDER COAT BASE, COATED WITH A SUPER DURABLE TGIC POLYESTER POWDER AND OVEN CURED. SEE COLOR MATRIX (WWW.POLIGON.COM) FOR AVAILABLE COLORS.



PORTERCORP HAS EARNED A **PCI-4000 CERTIFICATION** FROM THE GLOBALLY RECOGNIZED POWDER COATING INSTITUTE (PCI). QUALITY FINISHING IS CRUTAL TO THE LONG TERM PERFORMANCE OF SHELTER STRUCTURES. THIS CERTIFICATION UNDERSCORES THE COMMITMENT PORTERCORP HAS MADE TO MANUFACTURING QUALITY PRODUCTS.

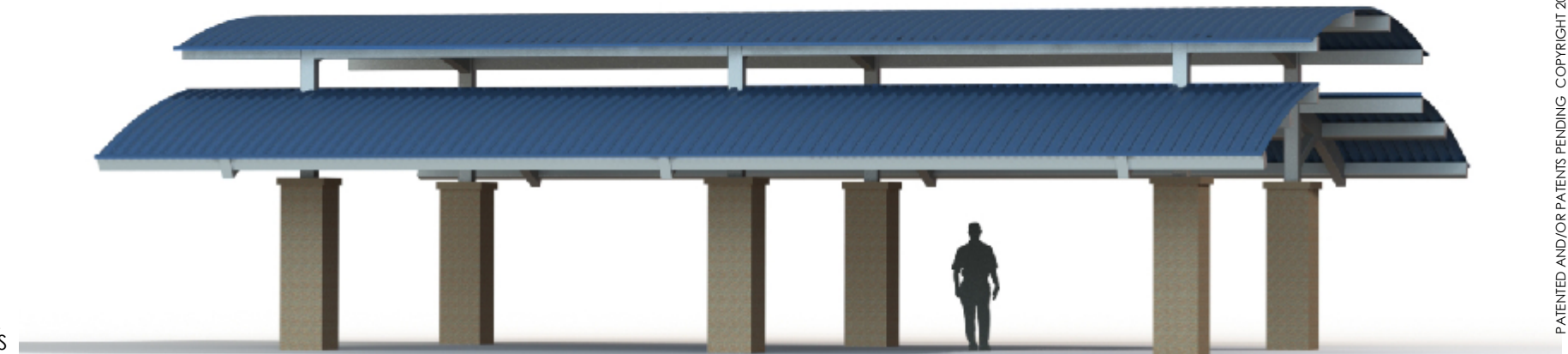
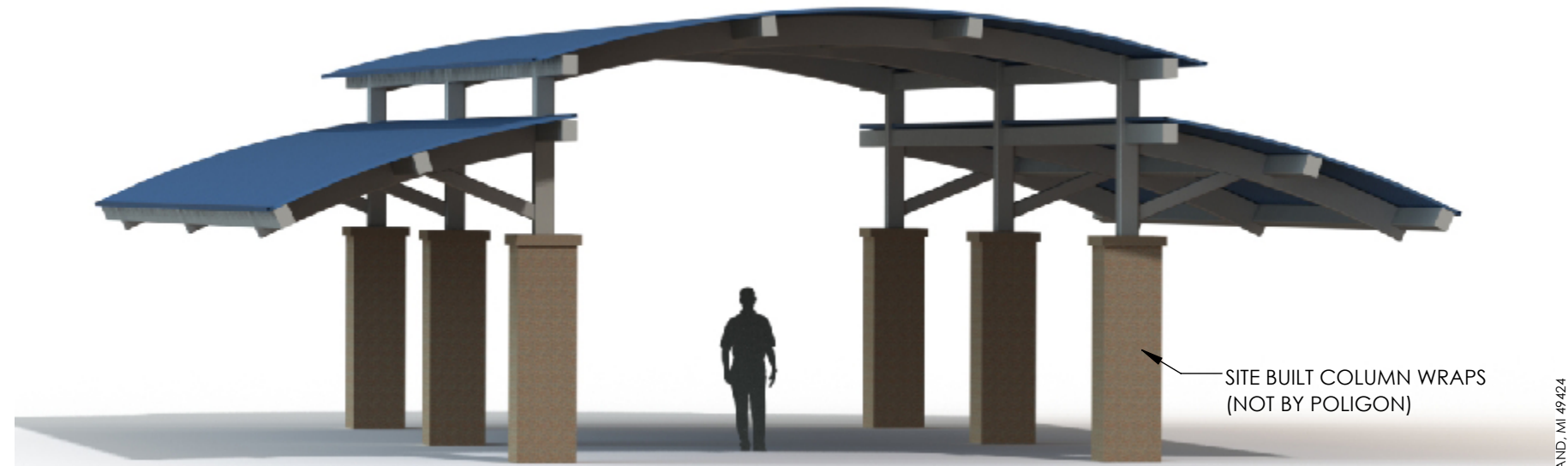
NOTE: THIS IS A PLANNING LEVEL DRAWING.

THE STRUCTURE SHOWN IS A CONCEPT, INTENDED TO INSPIRE AND PROVOKE THOUGHT, THE DRAWING IS NOT TO BE USED FOR CONSTRUCTION PURPOSES. ONLY USE JOB SPECIFIC ENGINEERED DRAWINGS FOR CONSTRUCTION.

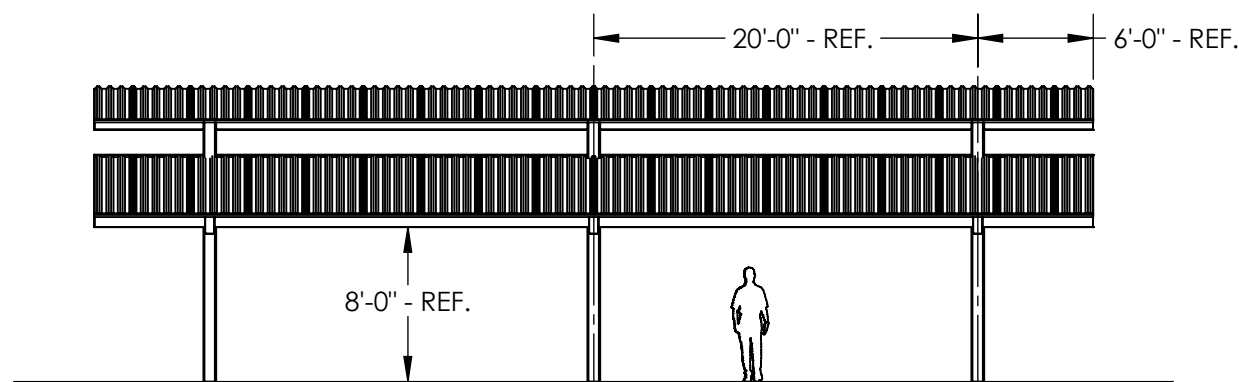


TOP VIEW

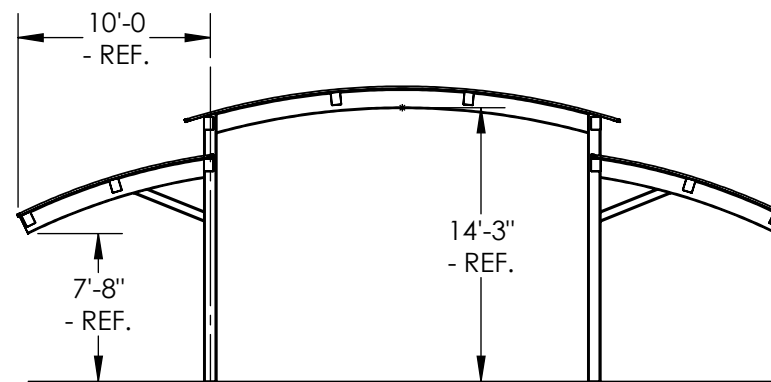
MEGA-RIB METAL ROOFING PANELS - TYP.



PATENTED AND/OR PATENTS PENDING COPYRIGHT 2007 PORTERCORP HOLLAND, MI 49424



SIDE VIEW



END VIEW

SHELTER MODEL:

DB-39: 40 X 52 CANTILEVER ARC STEEL SHELTER COLLECTION



www.poligon.com
616-399-1963
PORTERCORP, 4240 N. 136th AVE.
HOLLAND, MI 49424

