

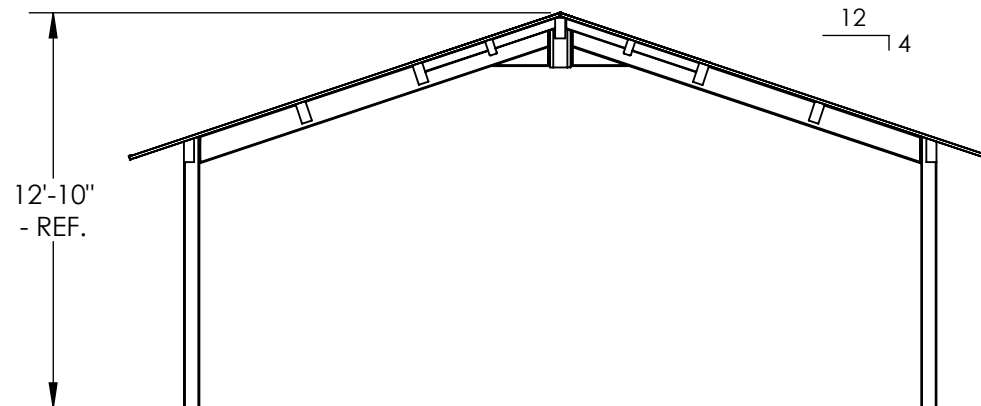
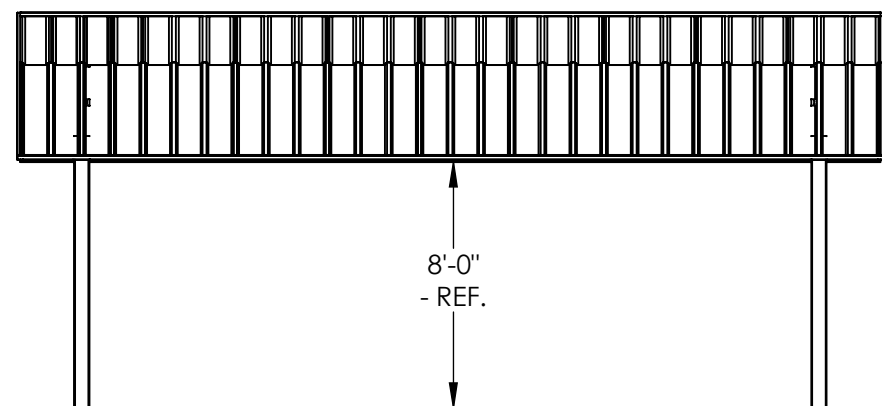
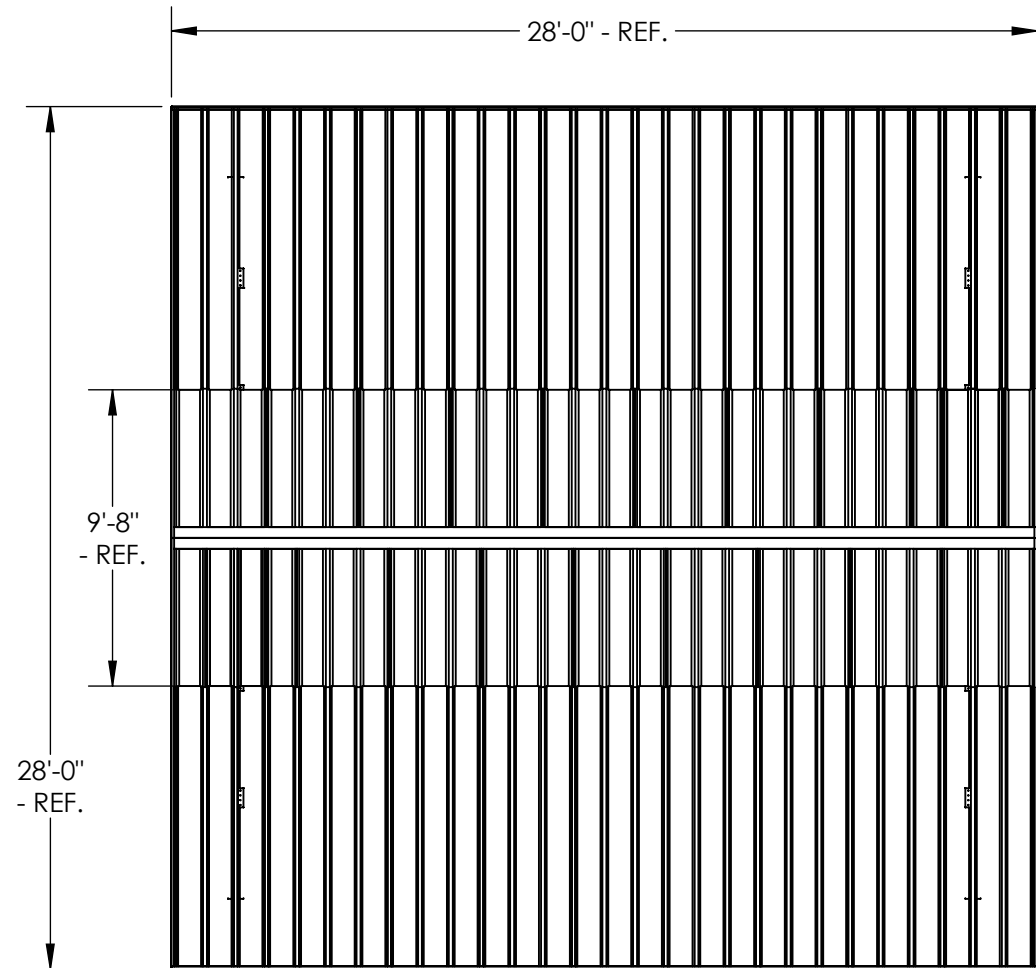
THIS IS A CONCEPT DRAWING, DIMENSIONS SHOWN ARE REPRESENTATIVE. TO ADAPT THIS CONCEPT TO MEET PROJECT SPECIFIC DESIGN REQUIREMENTS, FORWARD YOUR REQUEST TO POLIGON CUSTOMER SERVICE.



PORTERCORP HAS EARNED A **PCI-4000 CERTIFICATION** FROM THE GLOBALLY RECOGNIZED POWDER COATING INSTITUTE (PCI). PCI-4000 IS A QUALITY MANAGEMENT STANDARD AND CERTIFICATION SET. AS A CERTIFIED COATER, THIS PROGRAM MAKES PORTERCORP A LEADER IN THE INDUSTRY.

FRAME AND ORNAMENTATION FINISH: MEMBERS SHOT BLASTED TO NEAR WHITE CONDITION (SSPC SP-10), WASHED AND SEALED IN A PHOSPHATE SPRAY, COATED WITH A SPECIAL EPOXY PRIMER POWDER COAT BASE, COATED WITH A SUPER DURABLE TGIC POLYESTER POWDER AND OVEN CURED.
OPTIONAL UNDERCOAT: EPOXY E-COAT SYSTEM, USING FULL IMMERSION ELECTRO-DEPOSITION PROCESS.
 SEE COLOR MATRIX (WWW.POLIGON.COM) FOR AVAILABLE COLORS.

SUNSKY TRANSLUCENT PANELS ARE AVAILABLE TO FOR INSTALLATION ON POLIGON REK AND CHE MODEL SHELTERS OF ALL SIZES. CONTACT YOUR POLIGON REPRESENTATIVE FOR ADDITIONAL DETAILS.



SHELTER MODEL:
DB-37: 28X28 DAYLIT SHELTER
 STEEL SHELTER COLLECTION



www.poligon.com

616-399-1963

PORTERCORP, 4240 N. 136th AVE.
 HOLLAND, MI 49424



PATENTED AND/OR PATENTS PENDING. COPYRIGHT 2007 PORTERCORP HOLLAND, MI 49424