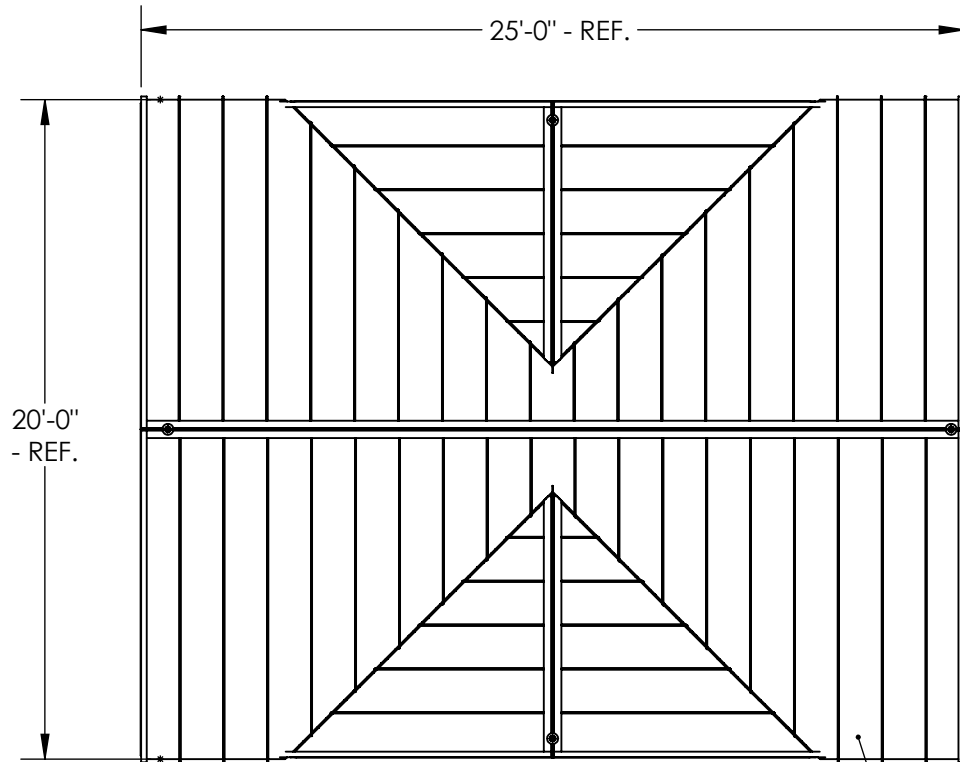


THIS IS A CONCEPT DRAWING, DIMENSIONS SHOWN ARE REPRESENTATIVE. TO ADAPT THIS CONCEPT TO MEET PROJECT SPECIFIC DESIGN REQUIREMENTS, FORWARD YOUR REQUEST TO POLIGON CUSTOMER SERVICE.



PORTERCORP HAS EARNED A **PCI-4000 CERTIFICATION** FROM THE GLOBALLY RECOGNIZED POWDER COATING INSTITUTE (PCI). PCI-4000 IS A QUALITY MANAGEMENT STANDARD AND CERTIFICATION SET. AS A CERTIFIED COATER, THIS PROGRAM MAKES PORTERCORP A LEADER IN THE INDUSTRY.

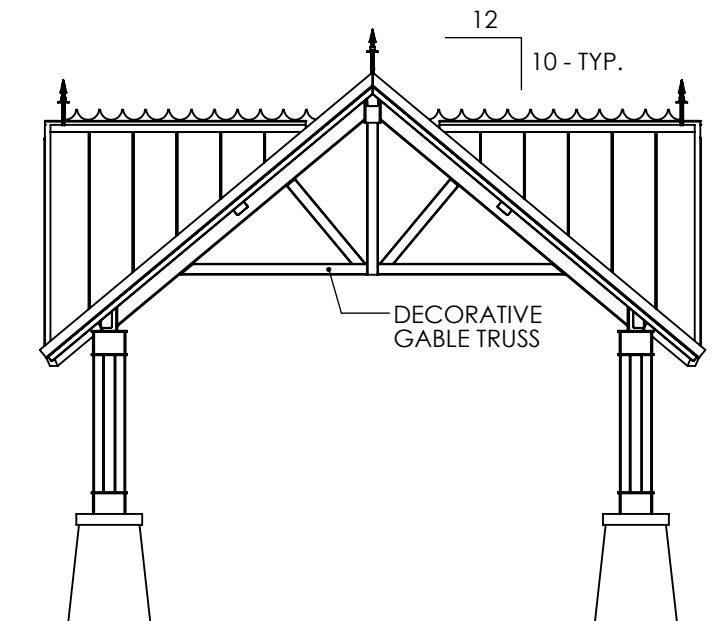
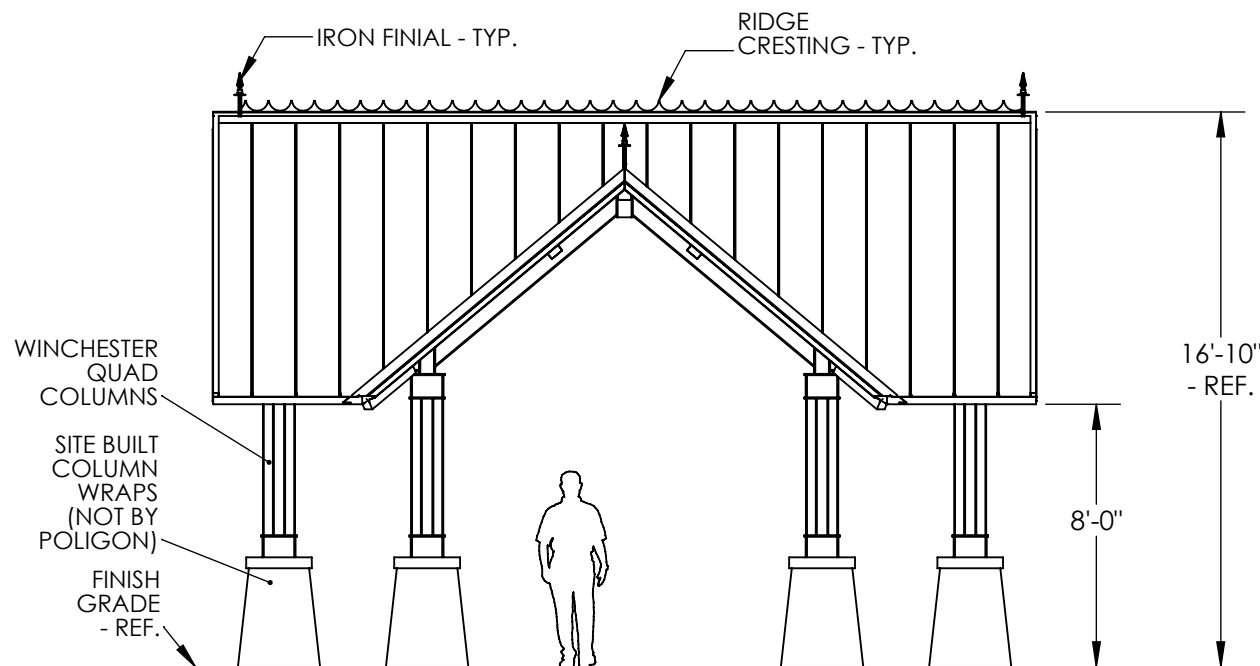
**FRAME AND ORNAMENTATION FINISH:** MEMBERS SHOT BLASTED TO NEAR WHITE CONDITION (SSPC SP-10), WASHED AND SEALED IN A PHOSPHATE SPRAY, COATED WITH A SPECIAL EPOXY PRIMER POWDER COAT BASE, COATED WITH A SUPER DURABLE TGIC POLYESTER POWDER AND OVEN CURED.  
**OPTIONAL UNDERCOAT:** EPOXY E-COAT SYSTEM, USING FULL IMMERSION ELECTRO-DEPOSITION PROCESS.  
 SEE COLOR MATRIX ([WWW.POLIGON.COM](http://WWW.POLIGON.COM)) FOR AVAILABLE COLORS.



24 GA., GALVALUME COATED, KYNAR 500 PAINTED, STANDING SEAM ROOFING PANELS SHOWN, OVER T&G ROOF DECK.



PATENTED AND/OR PATENTS PENDING. COPYRIGHT 2007 PORTERCORP HOLLAND, MI 49424



SHELTER MODEL:  
**DB3: 20X25 W/ DORMERS**  
**STEEL SHELTER COLLECTION**

**poligon**<sup>®</sup>

[www.poligon.com](http://www.poligon.com)  
 616-399-1963  
 PORTERCORP, 4240 N. 136th AVE.  
 HOLLAND, MI 49424

**PORTER** CORP.  
 A PLAYCORE Company

Copyright laws protect the style and visual appearance of the structure while patents may protect other parts of the design.